

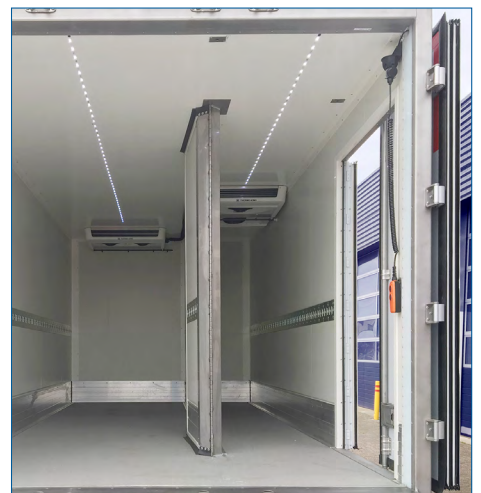
BR 25x-2

FerroFoam[®]-side doors



Hinged doors

- > **single- or double-leaf**
- > also as a flap that opens upwards
- > 45 mm thick
- > door frame **galvanised and lacquered** or **stainless steel** glass bead blasted
- > single-hand latches (left / right) **galvanised and lacquered** or **stainless steel** matt finish
- > *also as* double sided door handle lock
- > multi-lip seals with sliding coating
- > *optionally* with cargo tracks



AluTeam Fahrzeugtechnik GmbH
Brockhagener Straße 88, D-33649 Bielefeld
Tel. + 49 (0)521 - 41 73 11 - 0; Fax - 90
E-Mail: info@aluteam.de / www.aluteam.de

AluTeam Fahrzeugtechnik Wolfhagen GmbH
Hans-Böckler-Straße 4, D-34466 Wolfhagen
Tel. + 49 (0)56 92 - 609 - 0; Fax - 38
E-Mail: wolfhagen@aluteam.de / www.aluteam.de

06.22